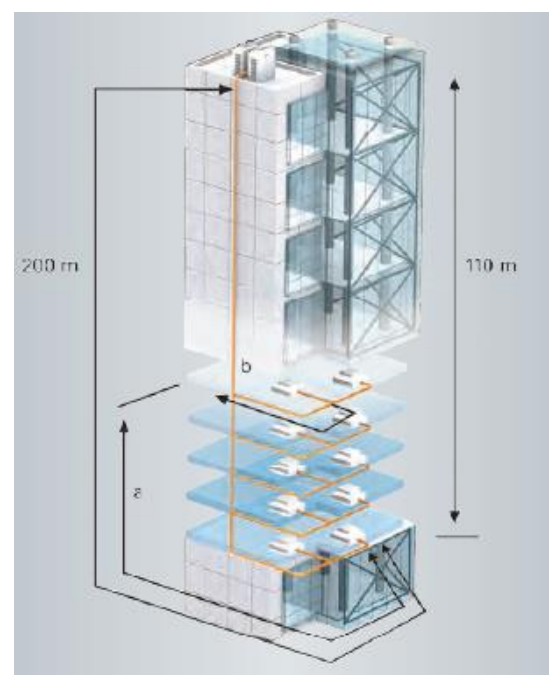


**TECHNICAL INFORMATION - MULTIPLE PREVENTION TECHNOLOGIES****VITOClima 444-S HR**  
ALL DC Inverter  
VRF Air Conditioning Systems

New series Vitoclima ALL DC Inverter VRF air conditioning systems are designed for energy saving optimization, uninterrupted comfort in operation and ease of using control systems

Vitoclima VRF air conditioning systems offer flexible installation thanks to extended pipeline

- The longest height difference between the outdoor and indoor unit is maximally 110m
- The maximal total length of the pipe is 1000 m (with restrictions included).
- The longest distance between the outdoor and indoor unit is 200m.
- The height difference between the indoor units is maximally 40m.
- The maximal length of the pipe after the first branch duct is 120m.



## Multiple Prevention Technologies

### Dust Prevention Function\*

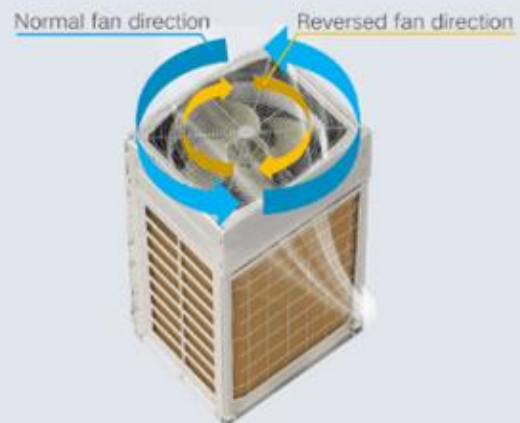
According to operating time of unit and real-time operating parameters, situation of heat exchanger can be estimated. When the accumulative dust of heat exchanger impacts the heat exchange efficiency, activating the backward operating function of fan can effectively remove the dust.



\*This function should be customized.

### Wind Prevention Function

Before the unit is turned on, if the fan conducts backward operation due to adverse wind, it will adopt dynamic braking to stop the backward fan, and then turn on the unit according to normal program.



### Lightning Prevention Function

Central air conditioning system has lightning protection and anti-surge function, which can effectively prevent the impact on air conditioning system due to instant overvoltage or overcurrent, so as to protect the personal and property safety of user.



Viessmann d.o.o. Beograd  
Pivljanina Baja 1, 11000 Beograd  
Serbia

Tel. 011/3097-887  
E-mail: viessmann.srb@sbb.rs  
[www.viessmann.rs](http://www.viessmann.rs)